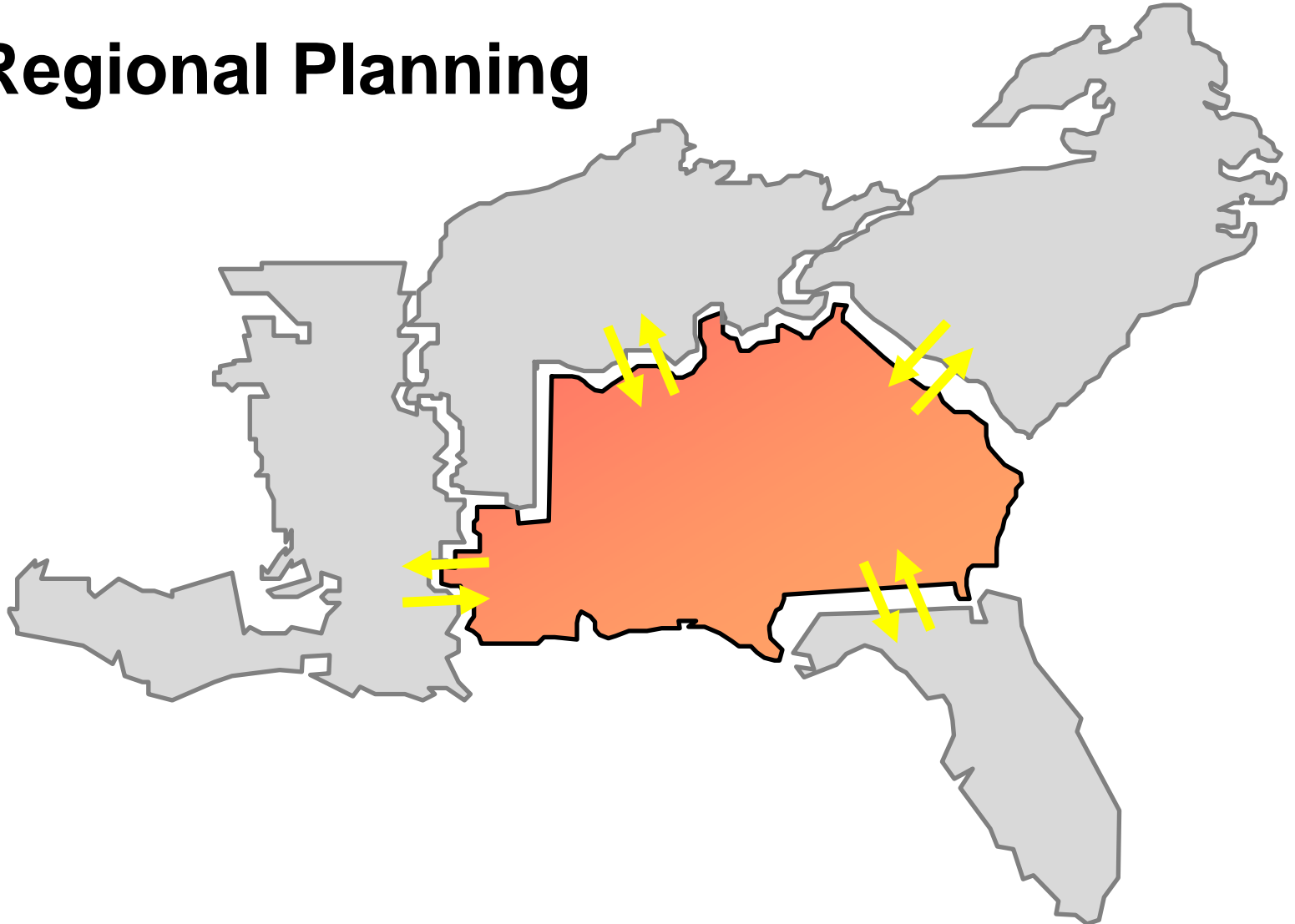


Regional Transmission Planning Summit

Regional Planning



Regional Transmission Planning Summit

Regional Planning Process

- One Joint Expansion Plan for the Region
 - Produced from Coordinated Assumptions
 - Coordinated with neighboring Transmission Providers
- **Goal:** Identify most effective, efficient, and reliable Transmission Expansion Plan for the Region



Regional Transmission Planning Summit

Regional Planning Process

- Region's Joint Expansion Plan Development is a "2 Part" Process
 - #1 -- Intra-Regional Planning
 - ITS Planning Process
 - West Coordinated Process
 - Central Planning
 - #2 -- Inter-Regional Planning
 - SERC Study Groups (VSTE/VASTE)
 - Coordinated Planning through Reliability Coordination Agreements



Regional Transmission Planning Summit

Regional Planning Process

➤ Intra-Regional Planning

➤ “To understand any answer it is important to understand the inputs into the equation”

➤ Intra-Regional Planning Inputs

➤ Load Forecast

➤ Network Resources

➤ Transmission Expansion

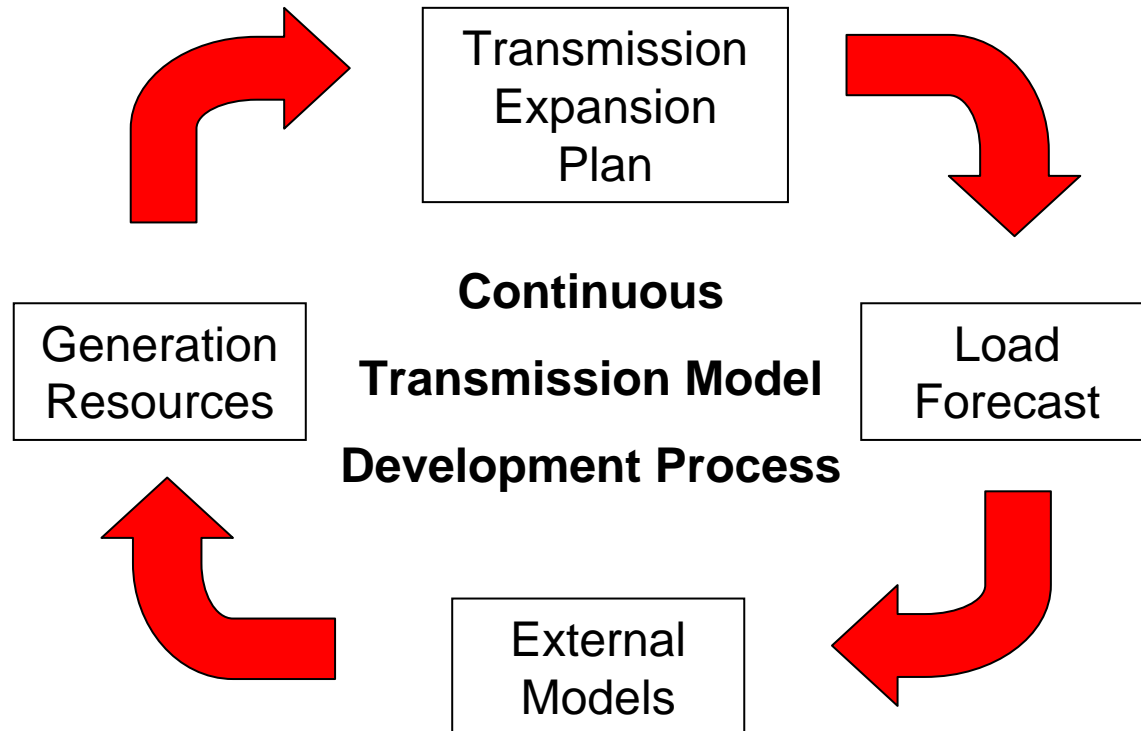
➤ The Transmission Expansion plan is developed through an iterative process looking at the needs of the Region from both a Intra and Inter-Region perspective.



Regional Transmission Planning Summit

Intra-Regional Planning

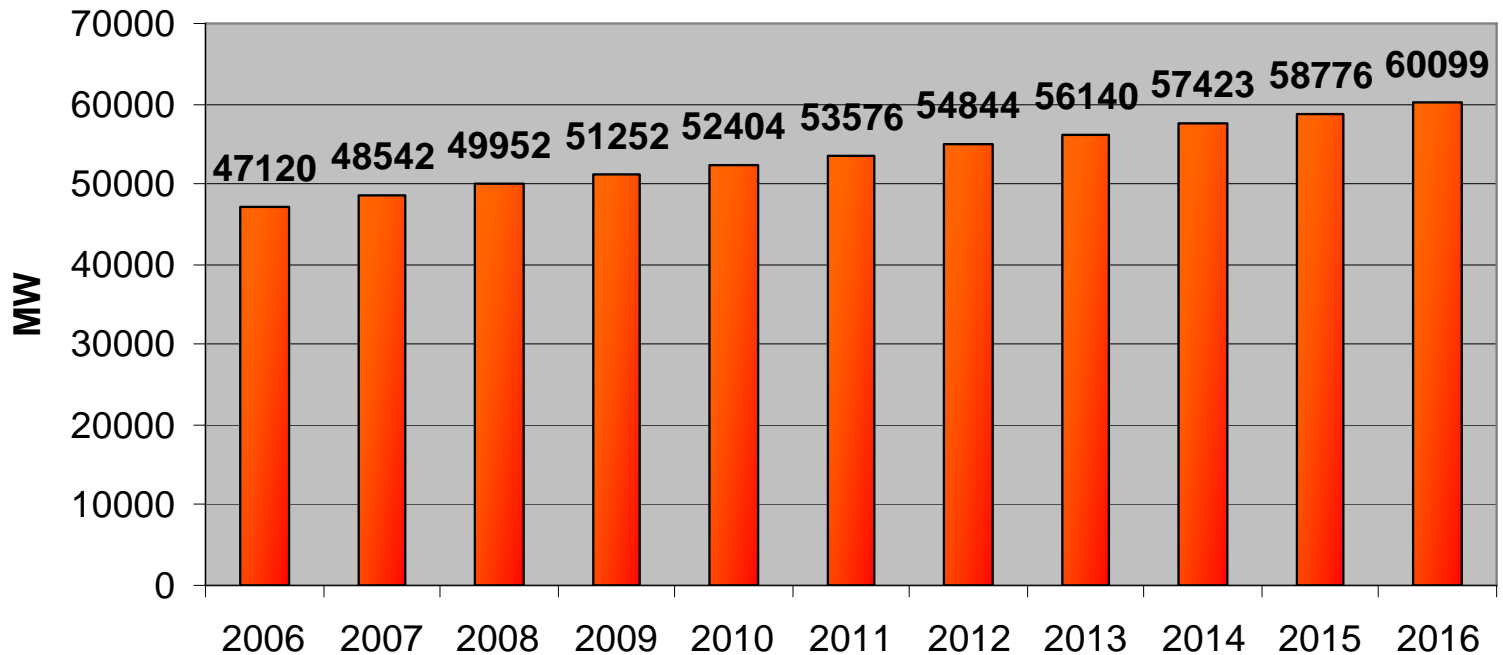
Model Development Process



Regional Transmission Planning Summit

Regional Model Assumptions

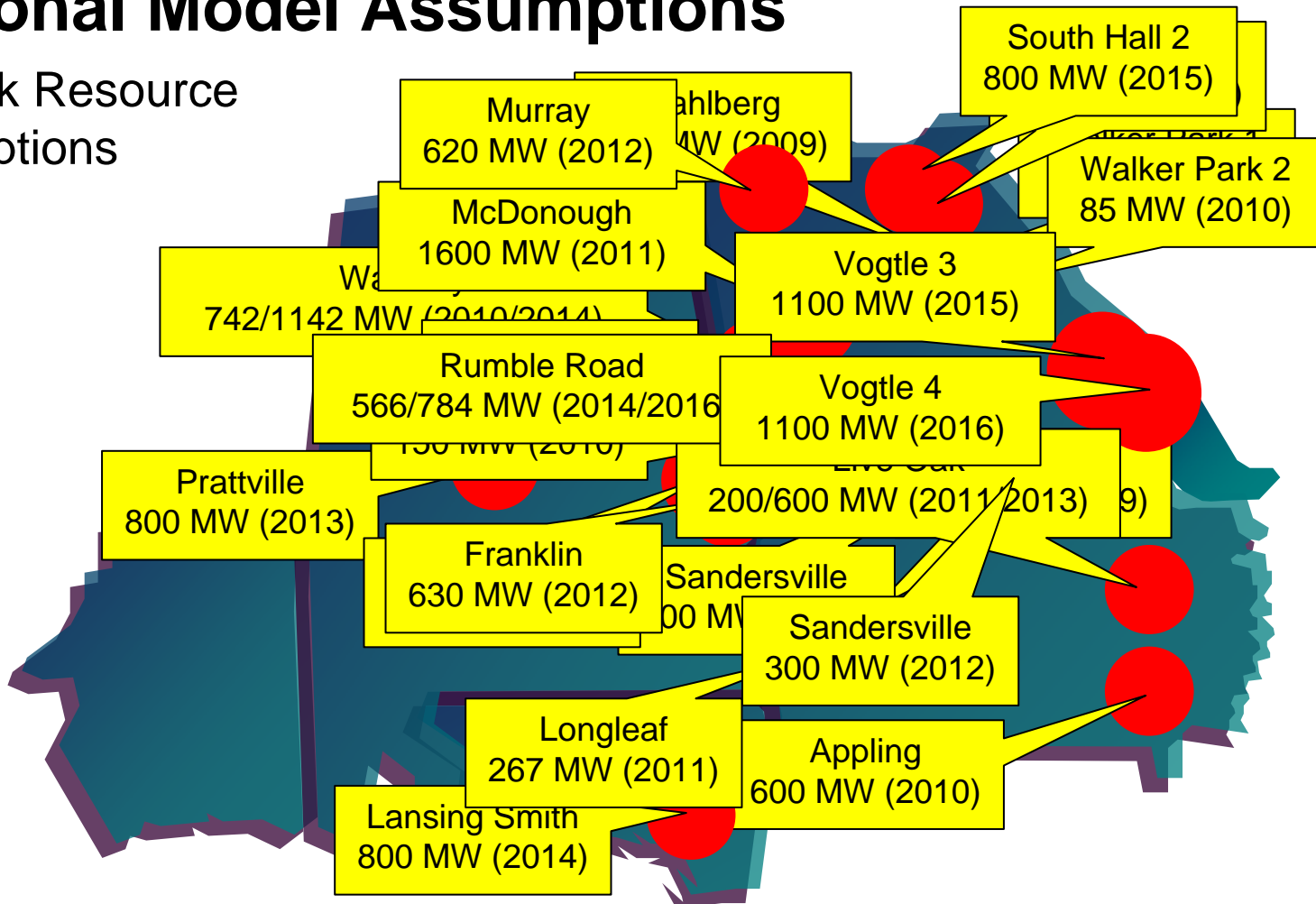
Region's Load Forecast (2 to 3% growth annually)



Regional Transmission Planning Summit

Regional Model Assumptions

Network Resource
Assumptions



Regional Transmission Planning Summit

Intra-Regional Planning

➤ External Models

- Obtained through SERC LTPFSG Databank
 - Formerly VSTE

➤ Internal Models

- Region's 10-year Transmission Expansion Plan
- For the purpose of today's meeting will be presented in two parts
 - East Region
 - West Region

